



PENINSULA

—  
FOUR

THE PLAZA

A development by







Peninsula, Business Bay

## An Emerging Oasis on the Doorstep of Downtown

Peninsula is a master-planned waterfront community development in the heart of Business Bay, offering residents a unique blend of urban city living, prime locality, and an exclusive waterfront lifestyle.

Bold and exciting, the community offers luxury waterfront living in Dubai's most vibrant new lifestyle destination.

Each development within the master community has been designed with the utmost precision to ensure unobstructed views, maximising Peninsula's unique waterfront location on the doorstep of Downtown Dubai.





## Location

# Seamlessly Connecting to the City's Key Hotspots

Peninsula is situated in the prime location of Business Bay, one of Dubai's most recognisable neighbourhoods. The area is well-connected and known for its cosmopolitan, fast-paced vibe.

Quickly becoming an area full of life and ripe with opportunity for those wishing to invest in a truly dynamic part of Dubai, Peninsula is leading the way with this location-defining development, setting new benchmarks for luxury living in Business Bay.

Boasting close proximity to the prestigious Downtown Dubai district, Dubai's Old Town and the Dubai Marina, it offers residents unrestricted access to the city's most recognisable landmarks.

BURJ AL ARAB

UMM SUQEIM 2

UMM SUQEIM 1

AL QUOZ INDUSTRIAL AREA

AL SAFA

JUMEIRAH

SHEIKH ZAYED ROAD

TOLERANCE BRIDGE

AL WASL

DUBAI OPERA

BUSINESS BAY

THE DUBAI MALL

DUBAI INTERNATIONAL FINANCIAL CENTRE

BURJ KHALIFA

ZABEEL

DUBAI FRAME

ALMANKHOL

AL KARAMA

LOUD METHA

DUBAI HEALTHCARE CITY

AL JADDAF

RASK AL KHOR WILDLIFE SANCTUARY

RASK AL KHOR INDUSTRIAL AREA

DUBAI DESIGN DISTRICT

AL AIN - DUBAI ROAD

AL MEYDAN ROAD

MEYDAN

DUBAI INTERNATIONAL AIRPORT

DUBAI FESTIVAL CITY

DEIRA









Located at the beating core of the fully-integrated master waterfront-community development, The Plaza at Peninsula is destined to become home to a lively environment where different people from all walks of life come together at the centre of this upbeat, urban marketplace.

The Plaza

# Live in the Heart of it All

Offering a unique waterfront lifestyle amid the eclectic excitement of Downtown Dubai, The Plaza features an extensive range of indoor and outdoor dining experiences, retail and entertainment facilities, along with generous areas of gardens and public realm.







Peninsula, Business Bay

## Introducing Peninsula Four, The Plaza

Where the ultimate in style meets impeccable design, Peninsula Four, The Plaza provides a combination of sophistication and elegance with a contemporary urban twist.

Featuring two 52-storey towers and a collection of 16 premium waterfront duplex lofts, Peninsula Four, The Plaza comprises an array of exquisitely finished studio, one, two, three and four-bedroom units.

Each unit is tastefully designed to make optimum use of space and create flowing, open living spaces, enhanced by striking floor-to-ceiling windows that frame the spectacular views of Downtown Dubai landmarks such as the Burj Khalifa, the iconic Dubai skyline, as well as the glistening waters of the Dubai Canal.







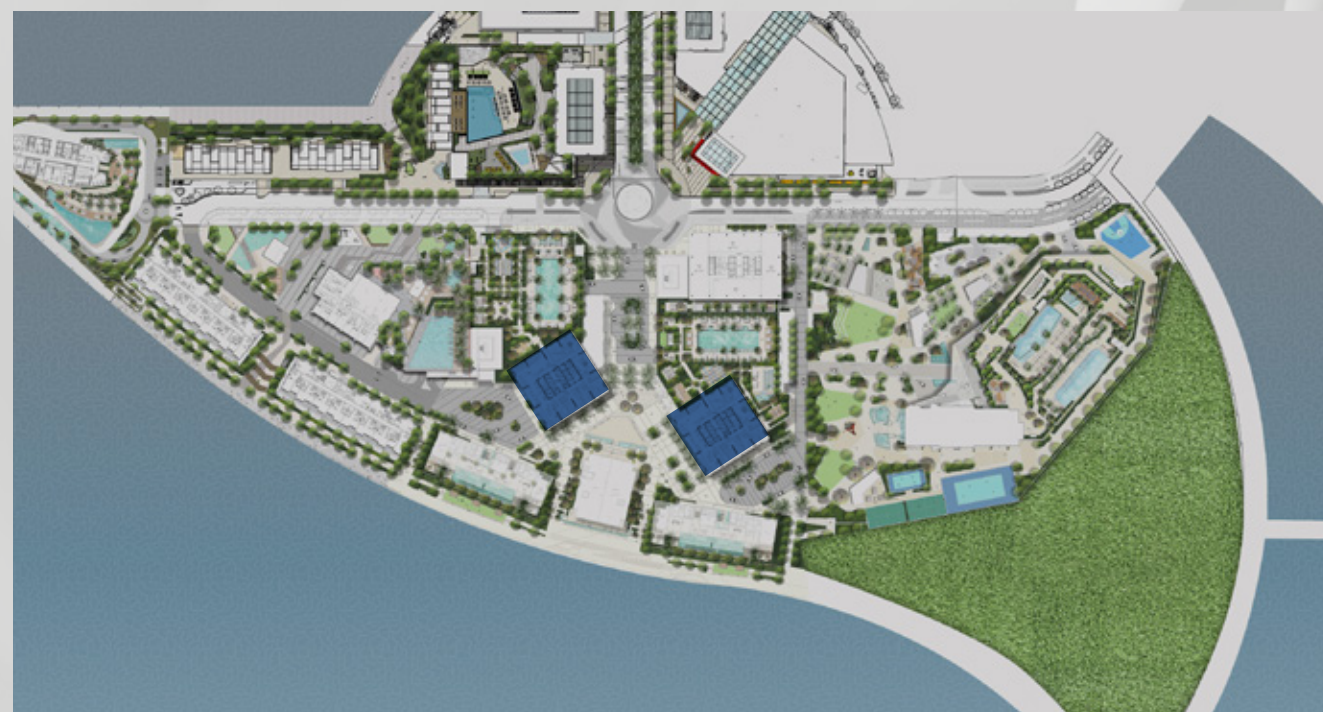


## Towers Overview

# Towering Above the Ordinary

The masterfully designed towers at Peninsula Four, The Plaza, are curated to deliver an elevated living experience in vibrant surroundings.

With its unquestionable architectural merit, the towers comprise a selection of studio, one, two, three and four-bedroom units synonymous with luxury urban living.







By day, the apartments are flooded with natural light, providing an ambience that is both energising and life-enhancing.

By night, residents will enjoy privileged views of the lights and romance of one of the world's most famous cities, with the towers spectacularly facing onto the landscaped plaza and breathtaking waterfront panoramas.

Unit sizes will range from 494 sq.ft. studios to 5,260 sq.ft. four-bedroom penthouses.









Studio





One Bedroom Kitchen





Master Bedroom





Three Bedroom Living





# Penthouse Living





Penthouse Dining







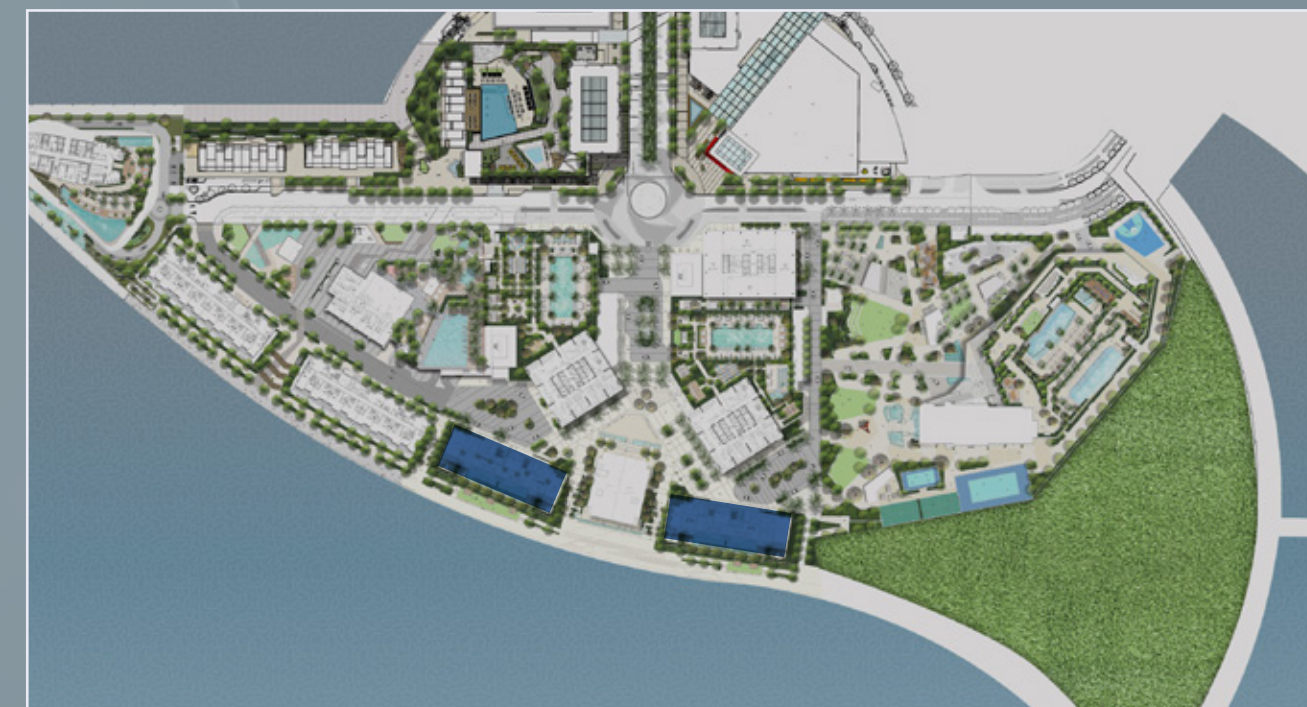


The Lofts

# Low-rise Luxury Living

Rich and unencumbered, the waterfront lofts at Peninsula Four, The Plaza welcome residents home to a relaxing refuge away from the bustle of city life.

Featuring three and four-bedroom duplexes, these exceptionally designed, spacious lofts are an impressive medley of style and sophistication.







Every last detail of The Lofts has been designed to exude a timeless elegance that creates a superb feeling of space and light.

Set to transcend all expectations with lush interiors and thoughtfully designed living areas, The Lofts are perfectly tailored for family living and for those who prefer the comfort of larger homes.

Taking luxury waterfront living to new heights, The Lofts feature three and four-bedroom duplexes ranging from 3,674 sq.ft. to 4,513 sq.ft, each meticulously designed for those who appreciate copious open spaces.







Four Bedroom Living





Three Bedroom Living





Four Bedroom Dining





Master Bedroom





Master Bathroom





The Lofts Gym

Amenities and Facilities

## Refresh, Re-Energize & Relax

Committed to world-class standards, each of The Lofts includes an exclusive array of onsite amenities designed to engage all your senses.

From lazing away sunny afternoons on the sundeck by the infinity lap pool, enjoying some downtime in the sauna, to hitting the weights at the state-of-the-art gym or breaking a sweat at the squash courts, Peninsula Four, The Plaza has something for everyone.





The Lofts Pool

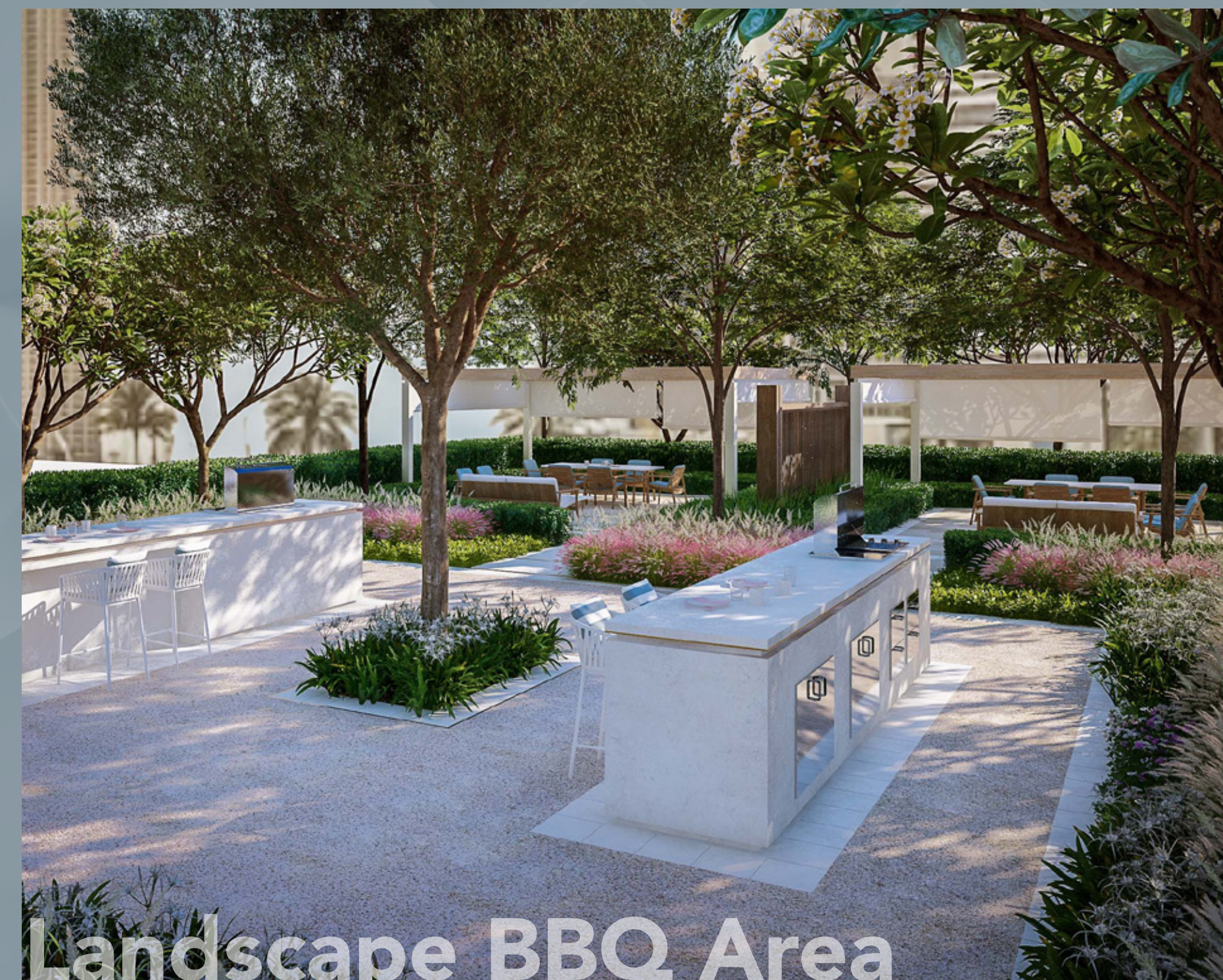




**Tower Pool**

Each tower at Peninsula Four, The Plaza has been designed with the ultimate facilities for exercise, relaxation, and socializing, enabling residents to enjoy an active life to the fullest.

Residents can unwind to a host of thoughtful amenities designed to energize and rejuvenate, with both towers featuring a spectacular swimming pool, kids pool, state-of-the-art gym and sauna.



**Landscape BBQ Area**





Retail, Dining & Entertainment

## Where Active Living Comes Naturally

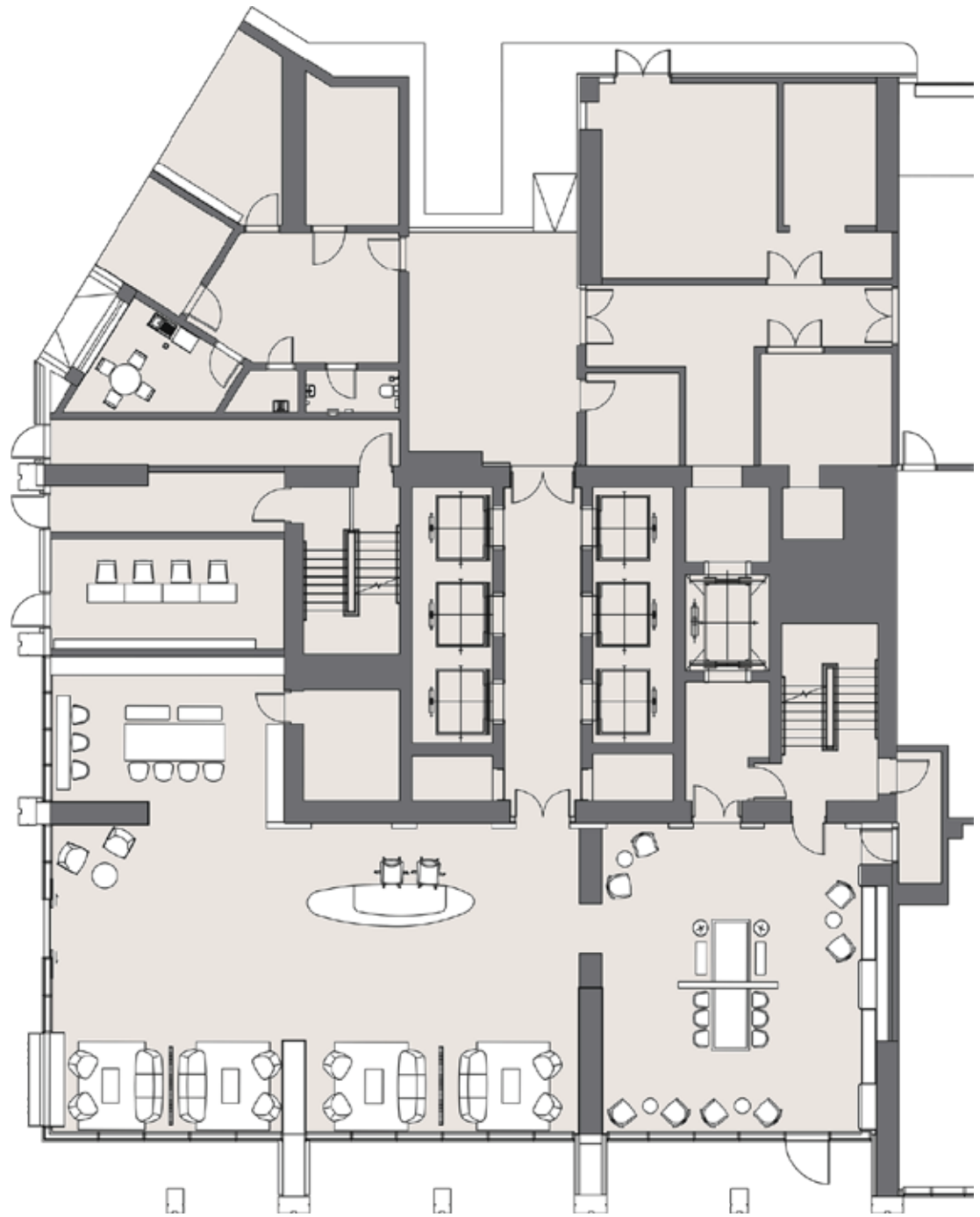
At The Plaza, an exceptional living experience continues outside your condominium, with a varied selection of cutting-edge amenities and lifestyle facilities.

Whether you're seeking tranquillity or lively interaction, The Plaza is the perfect stage for immersing yourself in the best that Peninsula, Business Bay has to offer.

With plentiful waterside eateries and al-fresco dining experiences, boutique stores and entertainment facilities, The Plaza is surrounded by a multitude of indoor and outdoor areas, making it an idyllic lifestyle destination to savour the full experience of urban living.





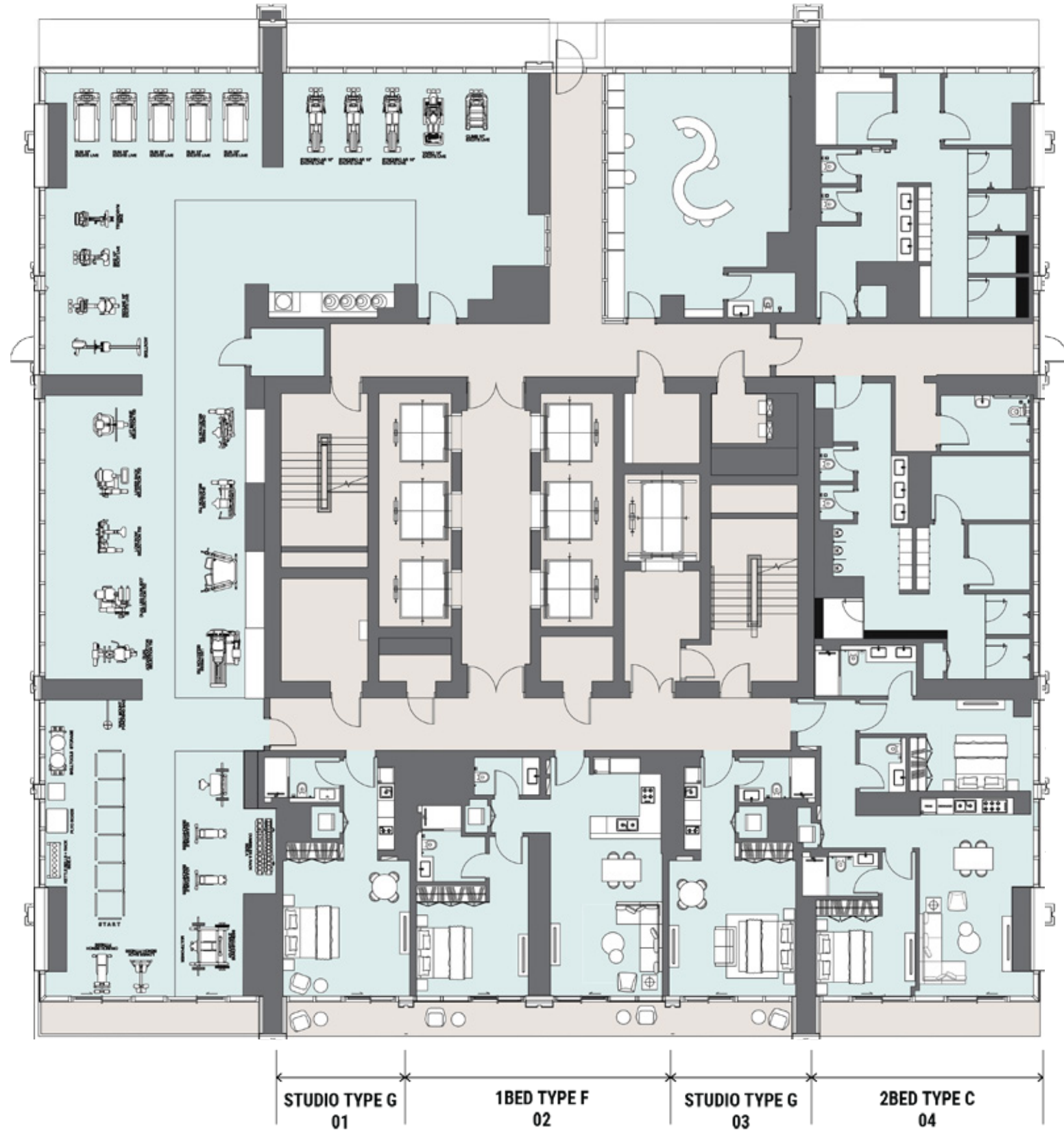


Towers  
Ground Level



Towers  
Podium Level 2





Towers  
Podium Level 3



The Plaza View

1BED TYPE A  
08

1BED TYPE G  
09



The Plaza View

Towers  
Levels 4-5



Community View



The Plaza View

1BED TYPE A  
01

1BED TYPE G  
15





Community View



City/Skyline View



Canal View



Canal View

Towers  
Level 6



Burj Khalifa  
View



Canal View



Canal View

Towers  
Levels 7-22



Burj Khalifa  
View



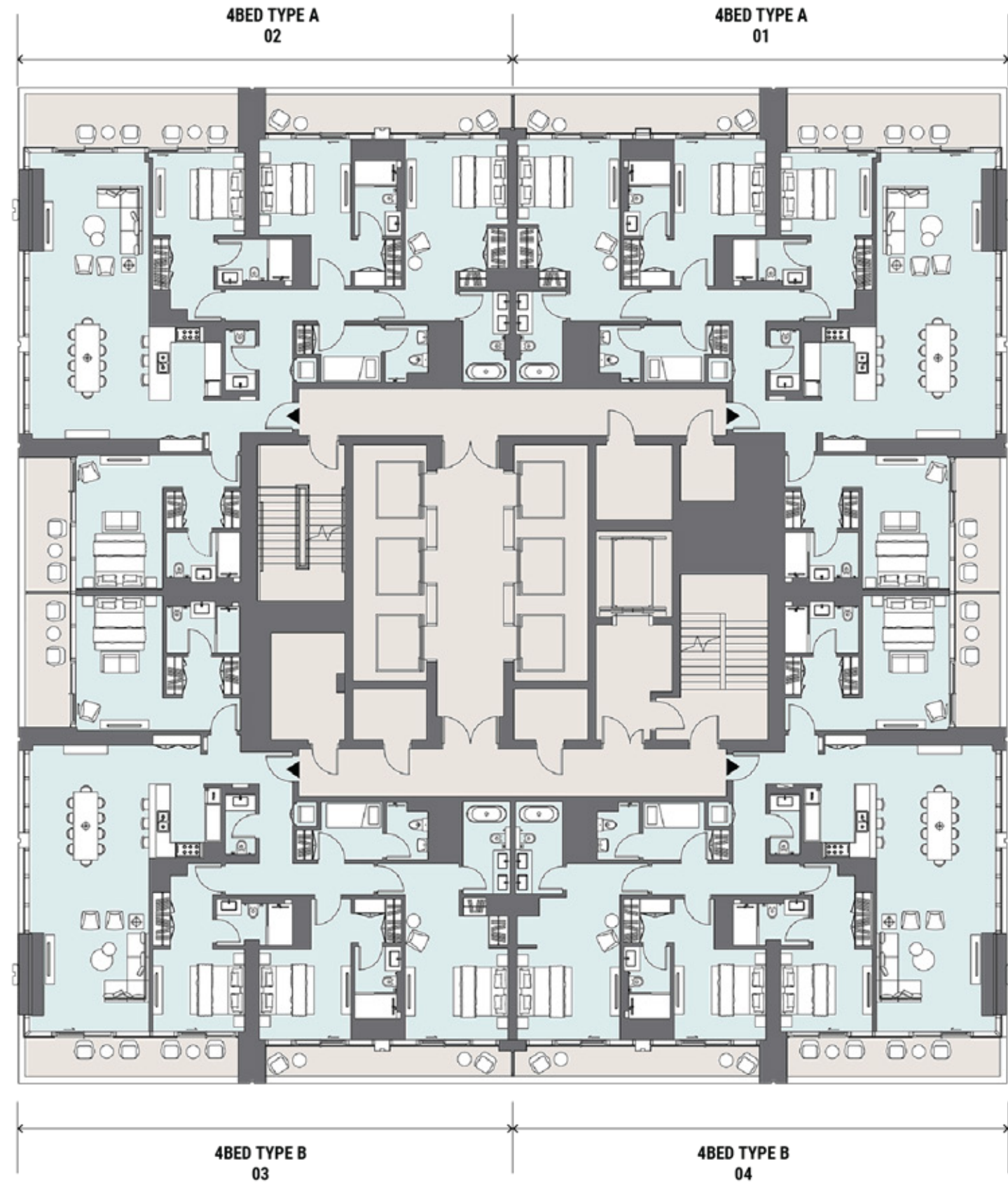


Towers  
Level 23

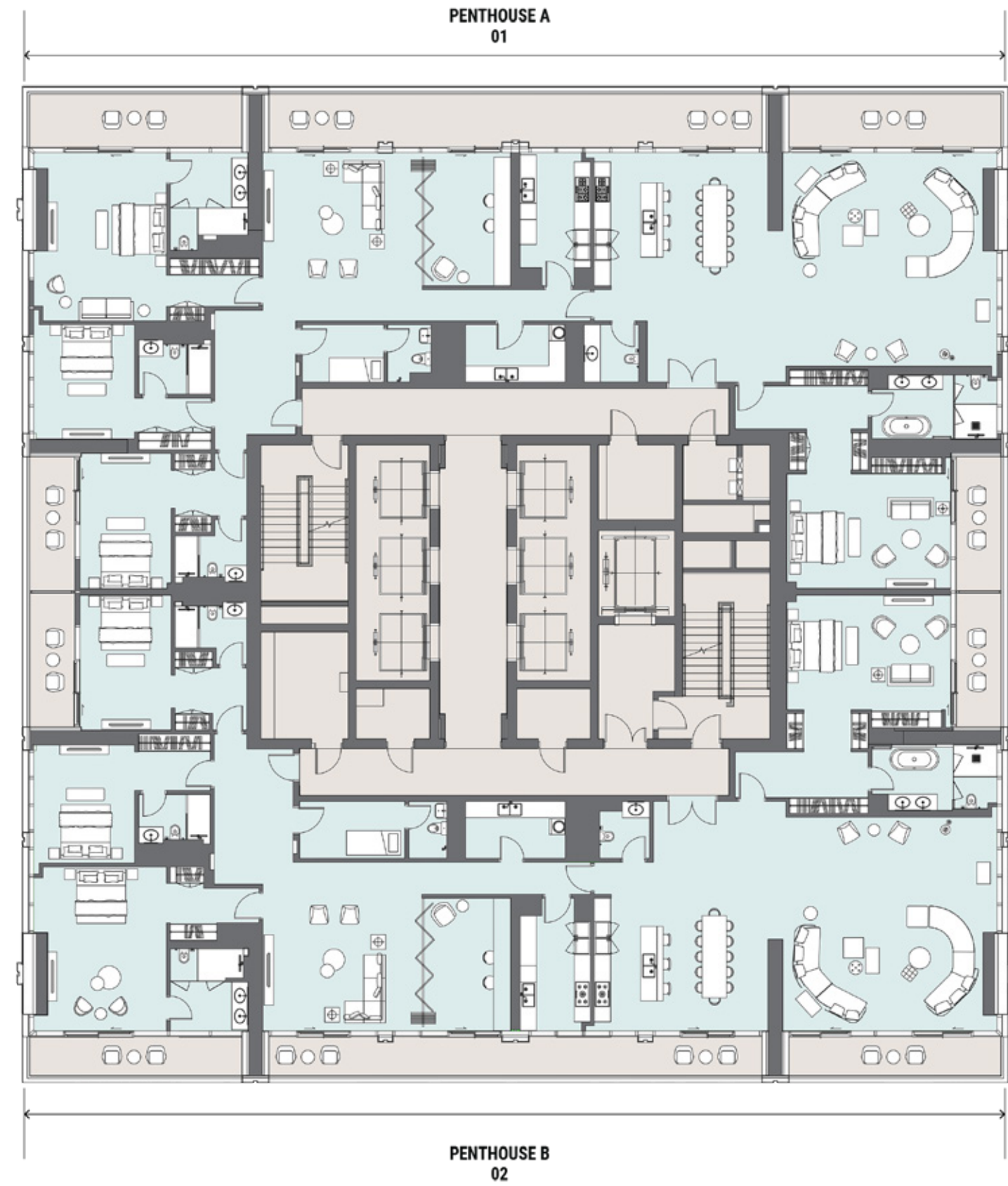


Towers  
Levels 24-47





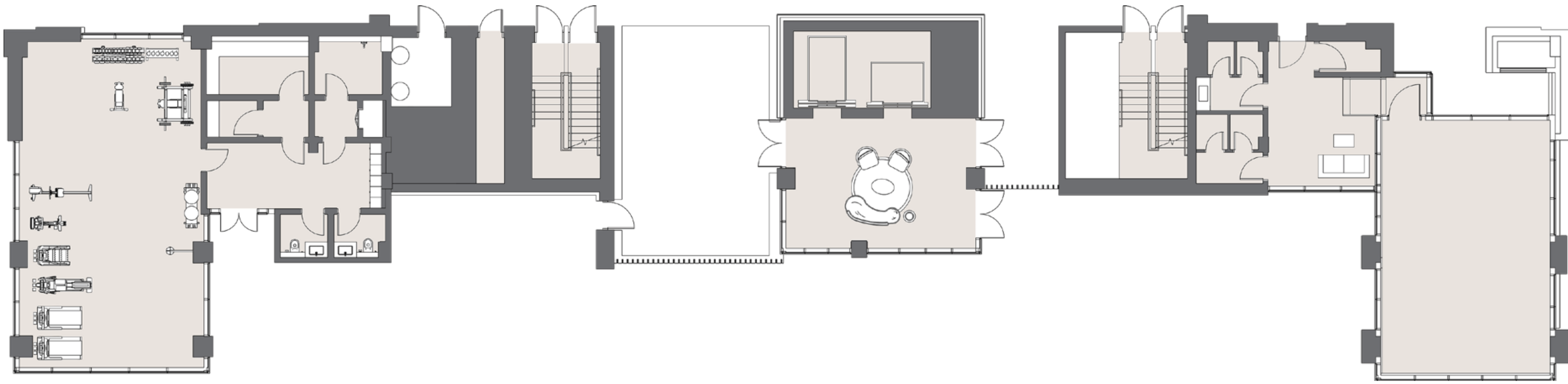
Towers  
Levels 49-50



Towers  
Level 51

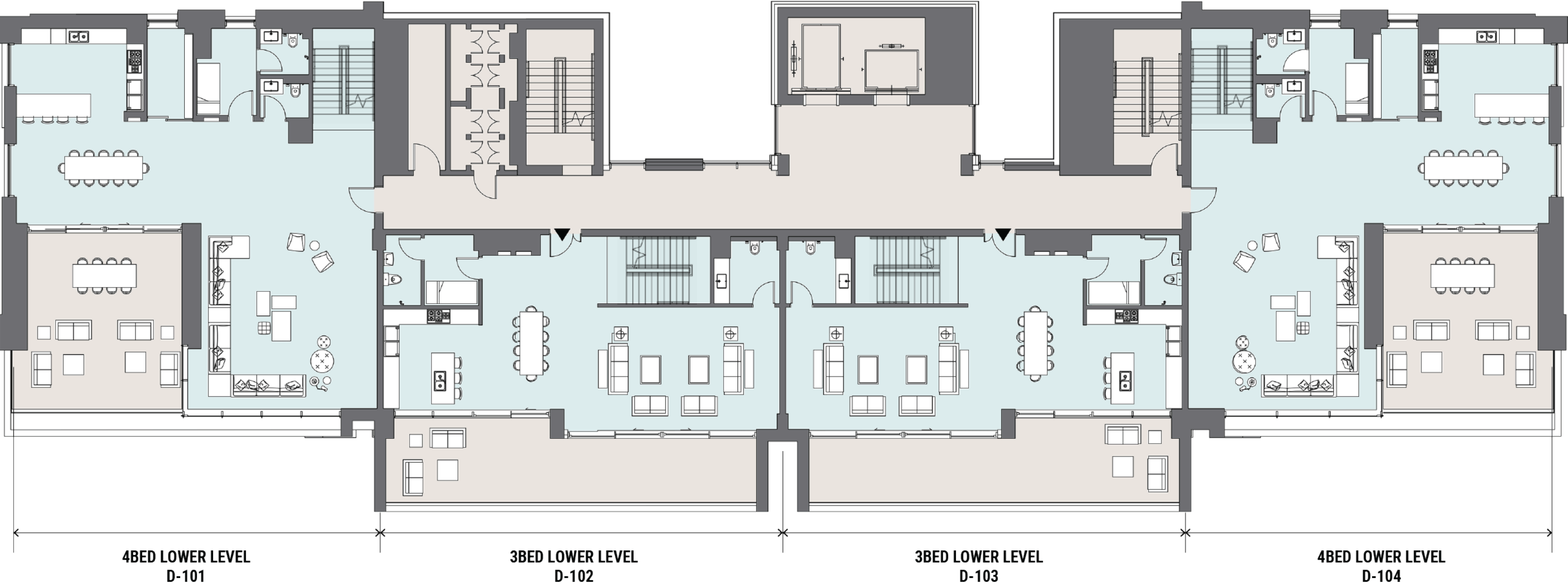






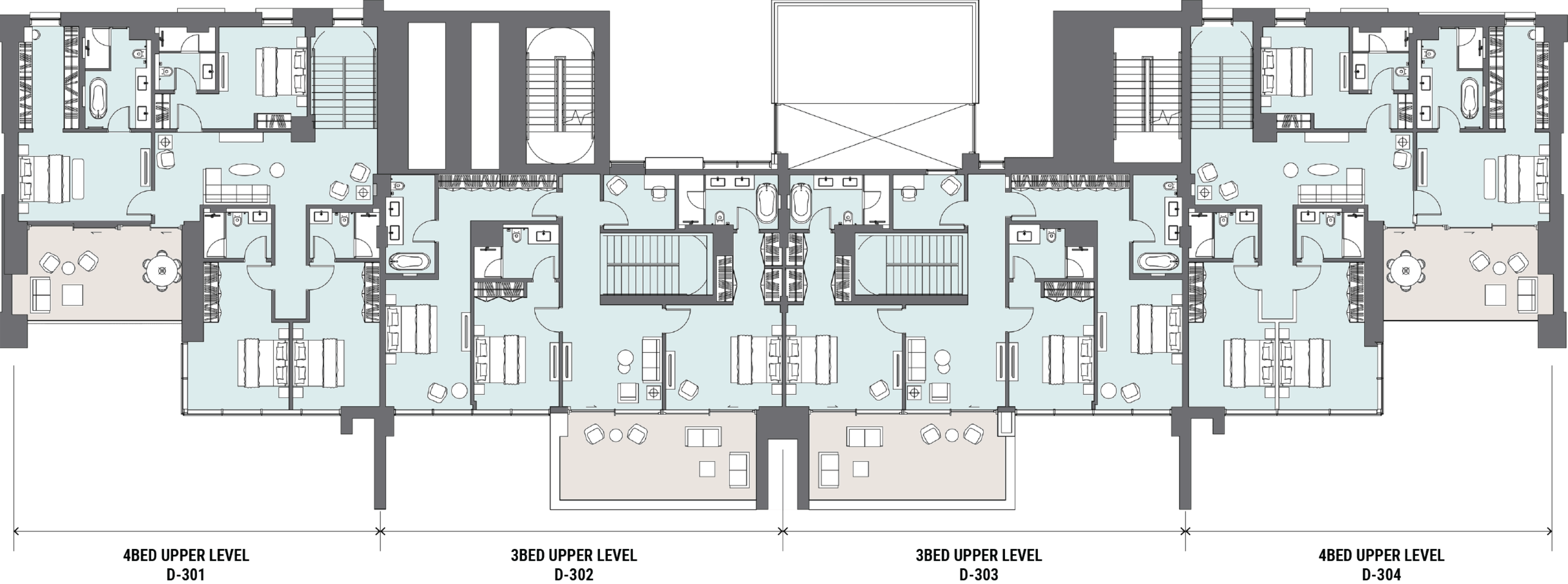
Premium Waterfront Lofts  
Ground Level





Premium Waterfront Lofts  
Level 01 and 03





Premium Waterfront Lofts  
Level 02 and 04





# Refined in the Details

## TOWERS / LOFTS

<p>📍 Towers</p> <p>Total Floors: 52</p> <p>Unit Breakdown</p> <ul style="list-style-type: none"><li>• Studio: 302</li><li>• One Bed: 473</li><li>• Two Bed: 132</li><li>• Three Bed: 82</li><li>• Four Bed: 16</li><li>• Four Bed Penthouse: 4</li></ul> <p>📍 The Lofts</p> <p>Total Floors: 4</p> <p>Unit Breakdown</p> <ul style="list-style-type: none"><li>• Three Bed Duplex: 8</li><li>• Four Bed Duplex: 8</li></ul> <p>📍 Layouts Available Per Unit</p> <p>Towers</p> <ul style="list-style-type: none"><li>• Studio: 6 Unit Types</li><li>• One Bed: 7 Unit Types</li><li>• Two Bed: 3 Unit Types</li><li>• Three Bed: 1 Unit Type</li><li>• Four Bed: 2 Unit Types</li><li>• Four Bed Penthouse: 2 Unit Types</li></ul> <p>The Lofts</p> <ul style="list-style-type: none"><li>• Three Bed Duplex: 1 Unit Type</li><li>• Four Bed Duplex: 1 Unit Type</li></ul> <p>📍 Available Views:</p> <ul style="list-style-type: none"><li>• The Plaza/Community (Tower Only)</li><li>• City/Skyline View (Tower Only)</li><li>• Canal View</li><li>• Burj Khalifa View (Tower Only)</li></ul>	<p>📍 Height of Lobby Ceiling - Towers: 5.3m; The Lofts: 4.5m</p> <p>📍 Height of Unit Ceiling - Towers: 2.4m-3m; The Lofts: 3.25m</p> <p>📍 Number of Elevators: 7 (Tower Only)</p> <p>📍 Lobby Area: Yes</p> <p>📍 Drop Off Area: Yes (Tower Only)</p> <p>📍 Kitchen Fittings/Specs:</p> <ul style="list-style-type: none"><li>• Fridge/ Freezer</li><li>• Stainless Steel Sinks</li><li>• Oven (Gas)</li><li>• Hob Extract Hood</li><li>• Provision for Dishwasher (One, Two &amp; Three Bed Units)</li><li>• Dishwasher (Four Bed Penthouse &amp; The Lofts)</li><li>• Provision for Washing Machine (One, Two &amp; Three Bed Units)</li><li>• Washing Machine (Four Bed Penthouse &amp; The Lofts)</li></ul> <p>📍 Parking Space Per Unit</p> <p>Towers</p> <ul style="list-style-type: none"><li>• Studio: 1</li><li>• One Bed: 1</li><li>• Two Bed: 1</li><li>• Three Bed: 2</li><li>• Four Bed: 2</li><li>• Four Bed Penthouse: 4</li></ul> <p>The Lofts</p> <ul style="list-style-type: none"><li>• Three Bed Duplex: 3</li><li>• Four Bed Duplex: 3</li></ul> <p>📍 Lobby Facilities</p> <ul style="list-style-type: none"><li>• 24-hour Security and Reception (Tower Only)</li><li>• Co-working Space (Tower Only)</li><li>• Lounge Area</li></ul> <p>📍 District Cooling: Yes</p>
---	--